

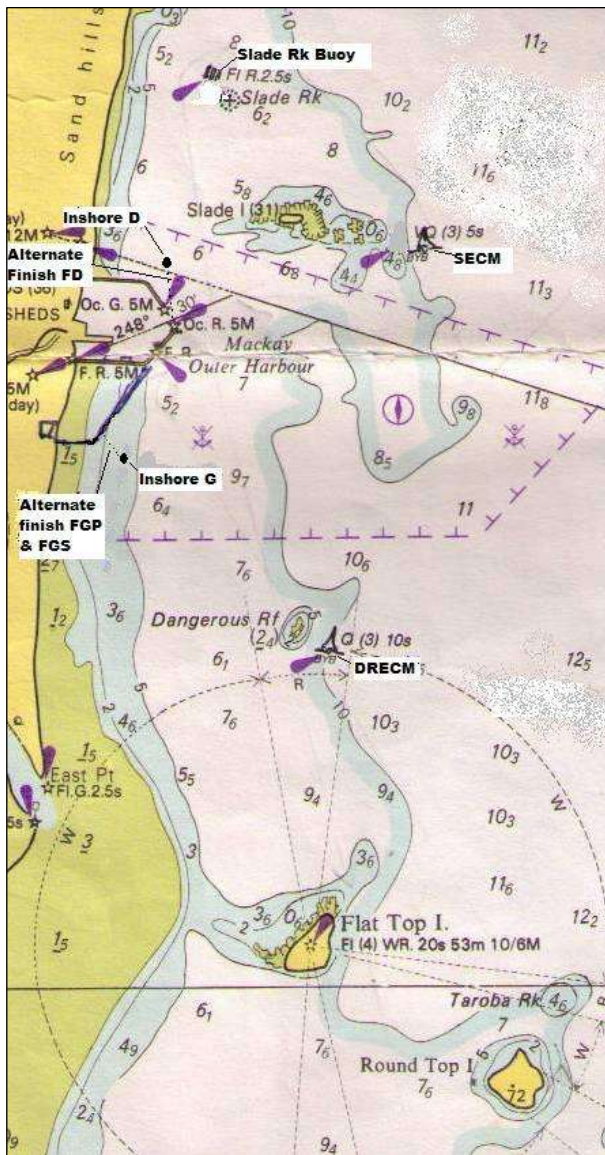
ADDENDUM 2 Short Inshore Courses

<p><u>COURSE 1</u> Start Inshore G P SECM P <u>Slade Rock Buoy</u> P* Inshore G P Slade Rock Buoy S SECM S Inshore G S Finish</p>	<p><u>COURSE 1R</u> Start Inshore G P SECM P <u>Slade Rock Buoy</u> P* Inshore G P Slade Rock Buoy S SECM S Inshore G S Finish</p>	<p><u>COURSE 2</u> Start Slade Rock Buoy S SECM S Inshore G S Slade Rock Buoy S <u>SECM</u> S* Inshore G S Slade Rock Buoy S SECM S Inshore G S Finish</p>
<p><u>COURSE 2R</u> Start Inshore G P SECM P Slade Rock Buoy P Inshore G P SECM P <u>Slade Rock Buoy</u> P* Inshore G P SECM P Slade Rock Buoy P Finish</p>	<p><u>COURSE 3</u> Start SECM P Slade Rock Buoy P <u>Inshore G</u> P* SECM P Slade Rock Buoy P Finish</p>	<p><u>COURSE 4</u> Start Inshore G P SECM P Inshore G P <u>SECM</u> P* Inshore G P SECM P Finish</p>
<p><u>COURSE 5</u> Start Inshore G P Slade Rock Buoy S SECM S Inshore D S Slade Rock Buoy S <u>SECM</u> S* Inshore D S Slade Rock Buoy S SECM S Finish</p>	<p><u>COURSE 5R</u> Start SECM P Slade Rock Buoy P Inshore D P SECM P <u>Slade Rock Buoy</u> P* Inshore D P SECM P Slade Rock Buoy P Inshore G S Finish</p>	<p><u>COURSE 6</u> Start <u>Round Top Is</u> P* SECM P Slade Rock Buoy P Finish</p>
<p><u>COURSE 6R</u> Start Slade Rock Buoy S <u>SECM</u> S* Round Top Is S Finish</p>	<p><u>COURSE 7</u> Start <u>Round Top Is</u> S* DRECM S Round Top Is S Finish</p>	<p><u>Abbreviations</u> SECM = Slade Is East Cardinal Mark DRECM = Dangerous Reef East Cardinal Mark</p>

COURSES TO BE USED WITH EACH WIND DIRECTION

Note – For ‘two race’ days, which is the norm for Short Inshore Races, the Officer of the day is instructed to select, if at all possible, a shorter course for the morning race.

Course	Suitable wind direction	Distance n mile	Course	Suitable wind direction	Distance
1	N, S	12	4	NE,SW	13
1R	N, S	12	5	SE, W	12.5
2	N, SE, SW	16	5R	E, NW	12.5
2R	S, NE, NW	16	6	N, SE	10.5
3	S, NW	9.5	6R	S, NW	10.5
3R	N, SE	9.5	7	S, SE	15



Course diagram for short inshore courses

Warning

Do not rely on this diagram for navigation & safety.

The indicated positions of Inshore D and Inshore G are approximate only.